
Incidence and Survival by Human Epidermal Growth Factor Receptor-2 Status in Young Women with Stage I-III Breast Cancer: SEER 2010-2016

Supplemental Tables and Figures

Supplementary Table S1. Unknown cancer stage by year among women aged 20-49 years diagnosed with breast cancer, 2010-2016, SEER 18 registries

Supplementary Table S2. Exclusions among women aged 20-49 years diagnosed with stage I-III breast cancer, 2010-2016, SEER 18 registries

Supplementary Figure S1. Five-year survival by race/ethnicity and HER2/HR status for women aged 20-49 years diagnosed with stage I-III breast cancer, 2010-2015, SEER 18 registries

Journal Pre-proof

Supplementary Table S1. Unknown cancer stage by year among women aged 20-49 years diagnosed with breast cancer, 2010-2016, SEER 18 registries

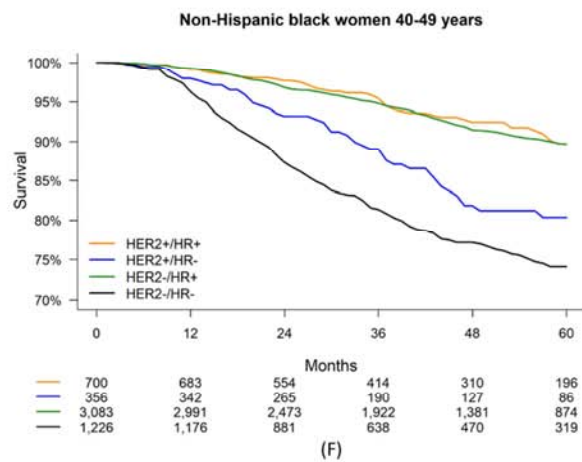
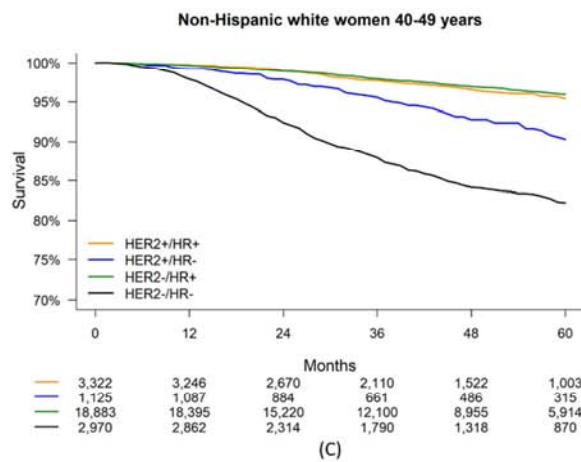
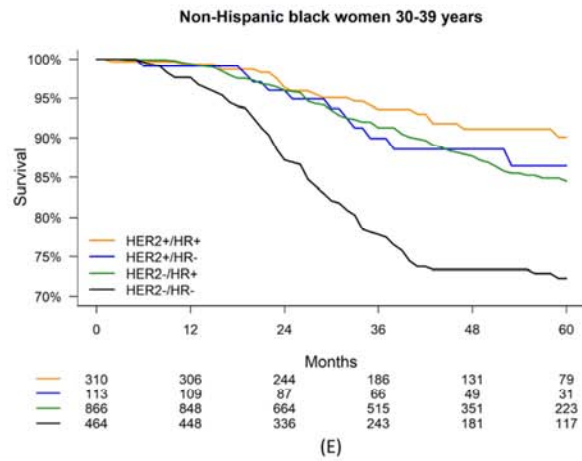
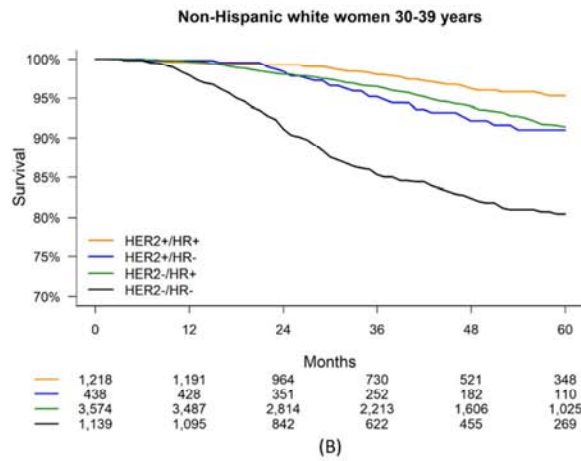
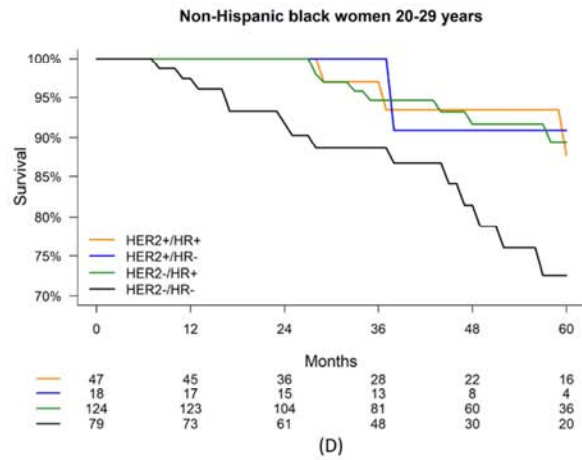
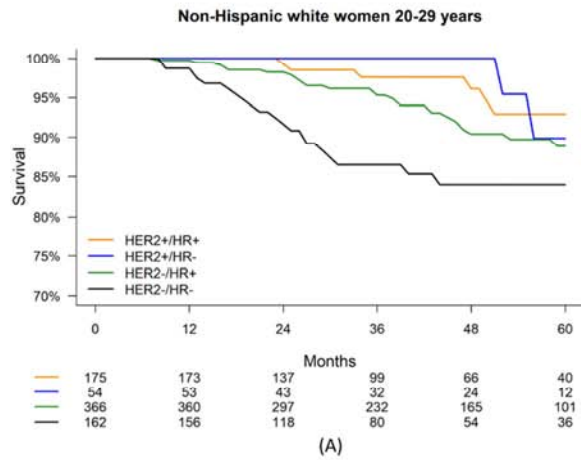
	All stage classifications	Unknown stage
	N	N (%)
Year		
2010	10,992	364 (3.3)
2011	11,422	338 (3.0)
2012	11,196	334 (3.0)
2013	11,290	323 (2.9)
2014	11,236	306 (2.7)
2015	11,370	274 (2.4)
2016	11,205	239 (2.1)
All 2010-2016	78,711	2,178 (2.8)

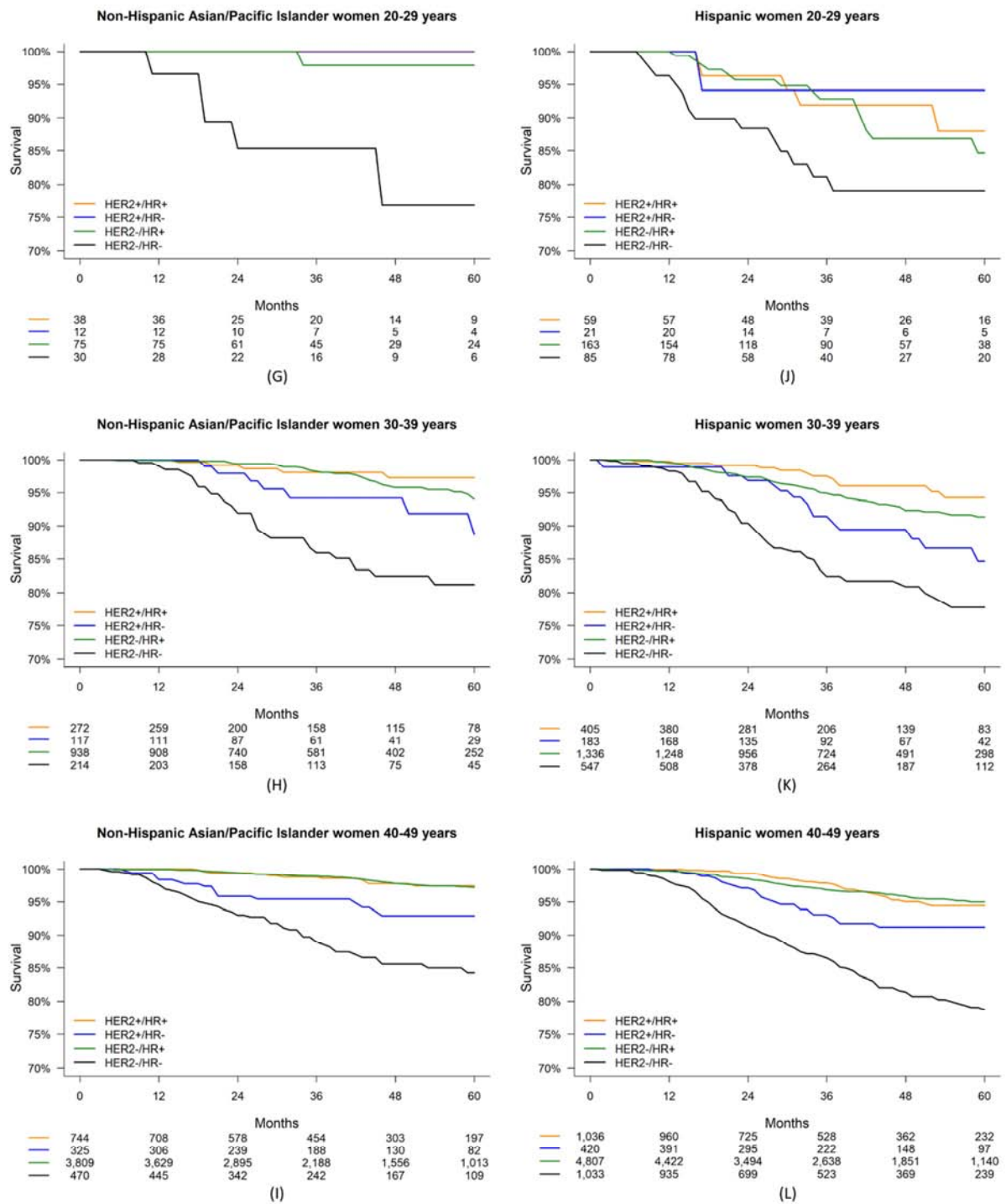
Abbreviations: HER2, human epidermal growth factor receptor-2; HR, hormone receptor; SEER, Surveillance, Epidemiology, and End Results
 Women with cancer diagnoses classified as stage 0 (n=86), IV (n=3,998), or NA (n=87) were also excluded from the analytic sample.

Supplementary Table S2. Exclusions among women aged 20-49 years diagnosed with stage I-III breast cancer, 2010-2016, SEER 18 registries

	All HER2/HR classifications	Borderline HER2 status	Unknown HER2 status, known HR status	HER2⁺ or HER2⁻, unknown HR status	Unknown HER2 and HR status	Excluded in analytic sample
	N	N (%)	N (%)	N (%)	N (%)	N (%)
Year						
2010	10,061	220 (2.2)	295 (2.9)	32 (0.3)	231 (2.3)	778 (7.7)
2011	10,467	210 (2.0)	214 (2.0)	20 (0.2)	226 (2.2)	670 (6.4)
2012	10,287	173 (1.7)	170 (1.7)	13 (0.1)	147 (1.4)	503 (4.9)
2013	10,362	167 (1.6)	147 (1.4)	11 (0.1)	155 (1.5)	480 (4.6)
2014	10,337	191 (1.8)	153 (1.5)	9 (0.1)	135 (1.3)	488 (4.7)
2015	10,531	204 (1.9)	145 (1.4)	8 (0.1)	119 (1.1)	476 (4.5)
2016	10,317	189 (1.8)	147 (1.4)	9 (0.1)	92 (0.9)	437 (4.2)
All 2010-2016	72,362	1,354 (1.9)	1,271 (1.8)	102 (0.1)	1,105 (1.5)	3,832 (5.3)

Abbreviations: HER2, human epidermal growth factor receptor-2; HR, hormone receptor; SEER, Surveillance, Epidemiology, and End Results





Supplementary Figure S1. Five-year survival by race/ethnicity and HER2/HR status for women aged 20-49 years diagnosed with stage I-III breast cancer, 2010-2015, SEER 18 registries

(A-C) Non-Hispanic white women aged 20-29, 30-39, and 40-49 years. (D-F) Non-Hispanic black women aged 20-29, 30-39, and 40-49 years. (G-I) Non-Hispanic Asian/Pacific Islander women aged 20-29, 30-39, and 40-49 years.

years. (J-L) Hispanic women aged 20-29, 30-39, and 40-49 years.

Abbreviations: HER2, human epidermal growth factor receptor-2; HR, hormone receptor; SEER, Surveillance, Epidemiology, and End Results

Numbers of patients at risk are given below the x-axis.

Journal Pre-proof