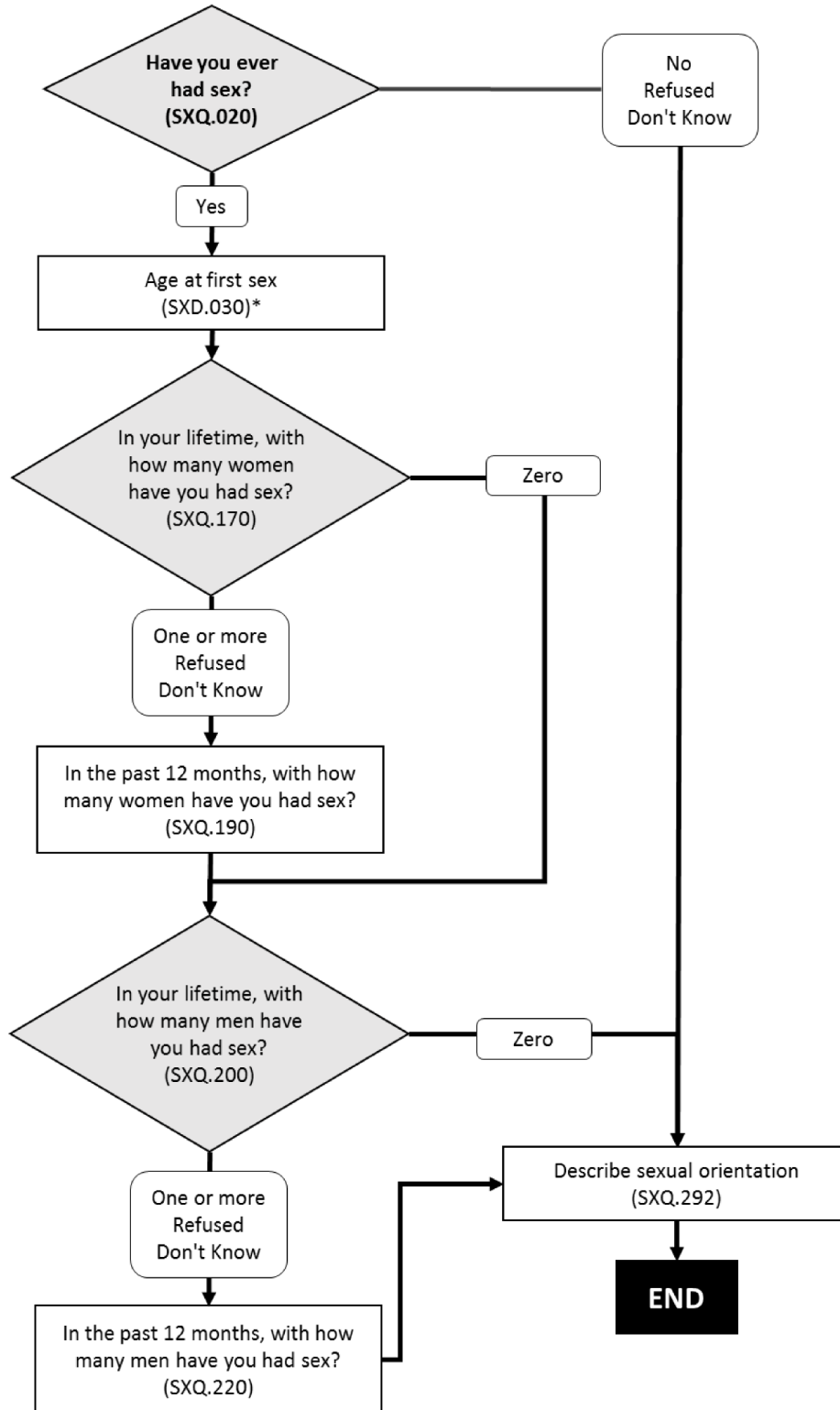


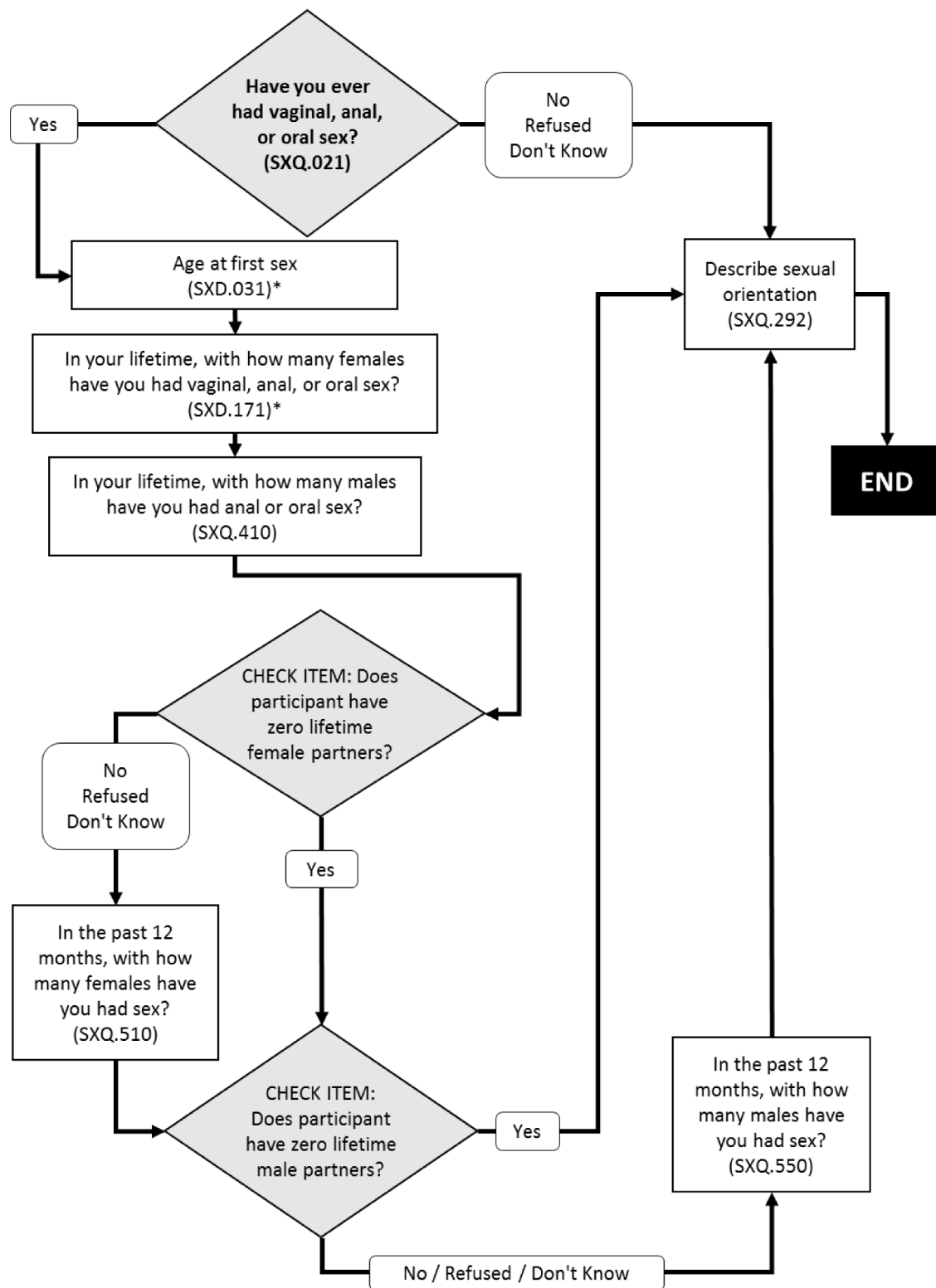
Supplemental Figure 1: Flowchart of MSM-related sexual behavior variables, NHANES 1999-2000

MSM = men who have sex with men; NHANES = National Health and Nutrition Examination Survey; males aged 20-59
 *Responses to SXD030 (age at first sex) between 1-9 years were recoded as "9 years or younger."



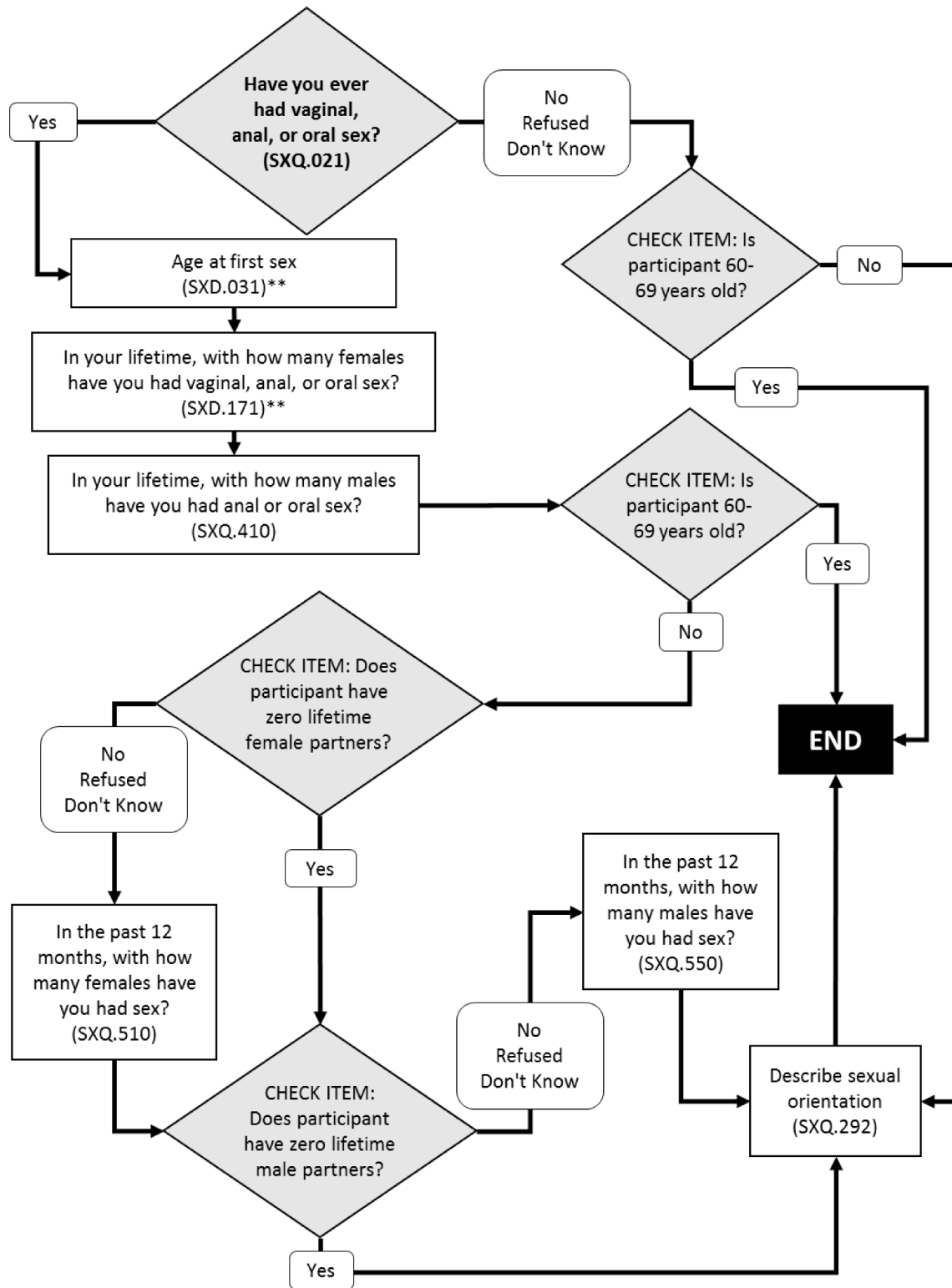
Supplemental Figure 2: Flowchart of MSM-related sexual behavior variables, NHANES 2001-2004

MSM = men who have sex with men; NHANES = National Health and Nutrition Examination Survey; males aged 14-59
 *Responses to SXD030 (age at first sex) between 1-9 years were recoded as "9 years or younger."



Supplemental Figure 3: Flowchart of MSM-related sexual behavior variables, NHANES 2005-2006

MSM = men who have sex with men; NHANES = National Health and Nutrition Examination Survey; males aged 14-59
 *Derived variable: SXD031 - Responses to age at first sex that were 9 years or less were grouped and coded as "9 years or younger"; SXD.171 - Responses that were 2000 or more were grouped and coded as "2000 or more."



Supplemental Figure 4: Flowchart of MSM-related sexual behavior variables, NHANES 2007-2008

MSM = men who have sex with men; NHANES = National Health and Nutrition Examination Survey; males aged 14-69
 *Derived variable: SXD031 - Responses to age at first sex that were 9 years or less were grouped and coded as "9 years or younger"; SXD.171 - Responses that were 2000 or more were grouped and coded as "2000 or more."

