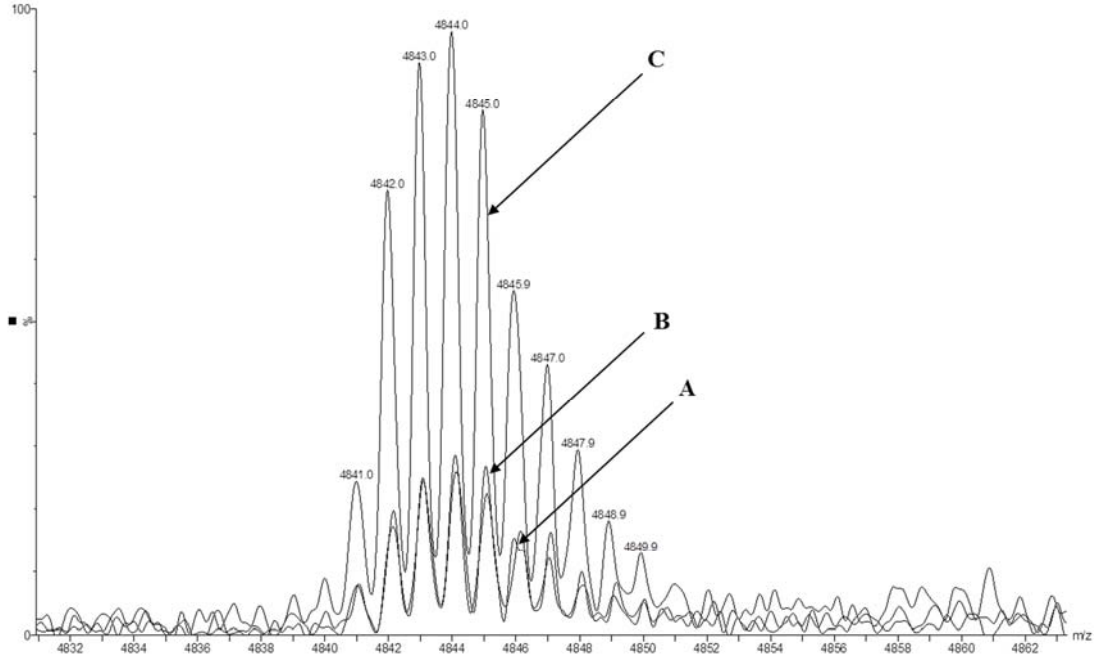


Supplemental Figure S1. Melanin inhibits peak abundance. +MALDI qTOF MS mass spectra of the multi-charged peak at m/z 4840 illustrating peak abundance inhibition caused by melanin. **(A)** *A. fumigatus* WT spectrum. **(B)** $\Delta arp2$ spectrum. **(C)** $\Delta alb1$ spectrum.



Supplementary Table S1. Summary of conidial germination in lung tissue. Conidia were quantified from 150 different fields of view at 40X magnification for each set of lungs. WT and $\Delta alb1$; N = 4 mice each. $\Delta arp2$; N = 5 mice.

Summary of Conidia Germination in Lung Tissue			
Exposure	Total Conidia	Swollen	Germ Tubes
Group		Conidia	
ASF-WT	4011	281 (7.0%)	29 (0.7%)
$\Delta arp2$	3625	138 (3.8%)	19 (0.5%)
$\Delta alb1$	1210	18 (1.5%)	0 (0.0%)