

## **SUPPLEMENTAL TABLES**

**SUPPLEMENTAL TABLE 1. Measures of Violence Exposure**

Construct	Variables	Sample	No. of items	Time period	Response options	Sample items <sup>e</sup>	Source	
Teen Dating Violence (TDV)	Any TDV	"Daters" only <sup>b</sup>	31 P 31 V	4 mos	Never (1) to Often (4)	"I bit him/her.", "I burned him/her." [severe violence] Includes subtype items below	12 items from the Safe Dates scales measuring severe physical abuse (Foshee et al, 1998) 50 items from the Conflict in Adolescent Dating Relationships Inventory (CADRI; Wolfe et al, 2001) 8 items (CADRI; Wolfe et al., 2001) 12 items (Foshee et al. 1998) CADRI; Wolfe et al, 2001	
	Physical TDV		10 P 10 V			"I slapped him/her or pulled his/her hair"		
	Relational TDV		3 P 3 V			"I spread rumors about him/her"		
	Sexual TDV		4 P 4 V			"I kissed him/her when he/she didn't want me to"		
	Threatening TDV		5 P 5 V			"I threatened him/her with a knife or gun (including waving or pointing a knife)"		
	Emotional TDV		10 P 10 V			"I did something to make him/her feel jealous."		
	Physical TDV <sup>a</sup>	"Daters" only	1 P 1 V	12 mos	0, 1, 2 or 3, 4 or 5, 6 +	"...physically hurt you on purpose"		
	Sexual TDV <sup>a</sup>		1 P 1 V		times	"...forced to do sexual things that you did not want to do"		
	Stalking		"Daters" only	2 P 2 V	4 mos	Yes, No		Regarding a current or former dating partner, "repeatedly followed, harassed, and contacted them when they didn't want to be (and in a way that felt uncomfortable, scary, or threatening to them)"
								Adapted from the 2010 National Intimate Partner and Sexual Violence Survey;(Black et al., 2011)

*(Continued)*

**SUPPLEMENTAL TABLE 1. Measures of Violence Exposure (*Continued*)**

Construct	Variables	Sample	No. of items	Time period	Response options	Sample items <sup>c</sup>	Source
Sexual Violence (SV) <sup>d</sup>		Full sample	1 P 1 V	4 mos	Never (1) to 10 or more times (4)	“forced (someone else) to do something sexual”	AAUW Sexual Harassment Survey (AAUW Foundation, 2001)
Sexual Harassment (SH) <sup>d</sup>		Full sample	7 P 6 V	4 mos	Never (1) to 10 or more times (4)	“unwelcome sexual comments, jokes, or gestures; called them gay or lesbian in a negative way; touched them in an unwelcome sexual way; showed them sexual pictures that they did not want to see; physically intimidated them in a sexual way” [in person] “asked someone to do something sexual online when they did not want to” and “sent a sexual picture via text message when the recipient did not want it” (perpetration only) [online]	10 items from the AAUW Sexual Harassment Survey (AAUW Foundation, 2001) assessed in person SH 3 items (2 P/1 V) from the Growing Up in the Media Survey (Ybarra et al. 2011) assessed online SH
Bullying		Full sample	6 P 2 V	30 days	Never (1) to 5 or more times (4)	“I excluded other students from my clique of friends,” “I helped harass other students,” “In a group, I teased other students.” [perpetration] “Other students called me names,” “Other students made fun of me” [victimization]	Illinois Bully Scale (Espelage & Holt, 2001)
Cyber-bullying		Full sample	2 P 2 V	4 mos	Never (1) to 10 or more times (4)	“I made aggressive or threatening comments to anyone online”; “I spread rumors about someone online, whether they were true or not.”	AAUW Sexual Harassment Survey (AAUW Foundation, 2001)
Physical Violence (by/against anyone)		Full sample	1 P 1 V	4 mos	Never (1) to 5 or more times (4)	“How often did you attack (get attacked by) someone with the idea of seriously hurting them (who seemed to want to seriously hurt you)?”	Juvenile Victimization Questionnaire – Child Self-Report Version (Finkelhor et al, 2005)

(Continued)

**SUPPLEMENTAL TABLE 1. Measures of Violence Exposure (*Continued*)**

Construct	Variables	Sample	No. of items	Time period	Response options	Sample items <sup>f</sup>	Source
Witnessing Violence	Witnessing IPV <sup>a</sup>	Full sample	2 V	4 mos	Yes, No	“did you [see/hear] a parent get pushed, slapped, hit, punched, or beat up by another parent, or their boyfriend/girlfriend”	
	Witnessing Assault with a Weapon		1 V			“Did you see anyone get attacked on purpose with a stick, rock, gun, knife, or other thing that would hurt at home, at school, at a store, in a car, on the street, or anywhere else?”	
	Witnessing Severe Violence in Community		1 V			“Were you in any place in real life where you could see or hear people being shot, bombs going off, or street riots?”).	

**Note.** P = perpetration items; V = victimization items. IPV = intimate partner violence. Reliability data provided in Supplemental Tables 1-5.

<sup>a</sup>All constructs were assessed in 6<sup>th</sup>-11<sup>th</sup> grade except for the Physical and Sexual DV items from the YRBS, which were measured in 9<sup>th</sup>-11<sup>th</sup> grade only.

<sup>b</sup>Students were asked if they had “ever dated” (baseline, Fall of 6<sup>th</sup> grade) or had “dated in the past 4 months” (follow-up surveys). Any student who had dated during the survey timeframe (“daters”) responded to dating violence and stalking (of a dating partner) items.

<sup>c</sup>Items or sample items are provided; In most cases, variants of items were used to assess perpetration and victimization.

<sup>d</sup>CDC defines sexual violence as inclusive of sexual harassment (Basile et al., 2014). In order to mirror the broader literature which tends to examine sexual violence (involving forced sexual contact) and sexual harassment (involving unwanted sexual attention or intimidation) separately among adolescents, the current measured these constructs independently.

<sup>e</sup>Two indicators asked about witnessing violence (1 seeing and 1 hearing) against a parent in an intimate partner relationship; A dichotomous scale score was created by scoring 1 if the respondent marked yes for either of the scale’s two items.

**SUPPLEMENTAL TABLE 2. Teen Dating Violence Exposure, Any and Subtypes**

Violence Type and Exposure		Grade	% Any			N			# Items	Cronbach Alpha	Means & Std. Deviations					Gender Difference		
			Endorsement			Overall	Male	Female			Overall	M <sup>a</sup>	F	t	p <sup>b</sup>			
			Overall	Male	Female													
TDV - Any	Perpetration	6	61.8	61.3	62.3	644	331	313	31	0.90	1.16	0.26	1.13	0.22	1.20	0.30	-3.16	0.002
		7	58.2	50.4	65.6	764	369	395	31	0.92	1.18	0.30	1.12	0.27	1.23	0.32	-4.76	0.000
		8	63.1	53.3	71.0	841	375	466	31	0.92	1.19	0.30	1.15	0.27	1.23	0.31	-4.11	0.000
		9	75.3	70.5	79.5	831	383	448	31	0.90	1.22	0.30	1.17	0.27	1.27	0.31	-5.02	0.000
		10	69.8	63.8	74.3	678	293	385	31	0.90	1.19	0.27	1.14	0.22	1.23	0.30	-4.89	0.000
		11	73.4	67.4	78.0	444	190	254	31	0.90	1.19	0.26	1.14	0.24	1.22	0.27	-3.28	0.001
	Victimization	6	61.9	63.3	60.4	645	332	313	31	0.89	1.17	0.27	1.16	0.26	1.19	0.28	-1.13	
		7	59.3	54.5	63.7	761	367	394	31	0.92	1.17	0.29	1.15	0.29	1.20	0.29	-2.26	0.024
		8	64.9	58.1	70.4	838	372	466	31	0.91	1.20	0.31	1.18	0.31	1.22	0.30	-1.88	0.060
		9	76.7	73.9	79.0	831	383	448	31	0.91	1.24	0.31	1.23	0.32	1.25	0.30	-0.93	
		10	71.7	67.6	74.8	678	293	385	31	0.90	1.21	0.27	1.19	0.28	1.22	0.27	-1.10	
TDV - Emotional	Perpetration	6	57.1	57.1	57.1	651	336	315	10	0.83	1.30	0.43	1.25	0.36	1.36	0.49	-3.26	0.001
		7	54.6	46.0	62.8	773	378	395	10	0.87	1.33	0.48	1.23	0.40	1.42	0.53	-5.71	0.000
		8	61.5	52.4	68.8	845	374	471	10	0.86	1.37	0.48	1.27	0.40	1.44	0.52	-5.36	0.000
		9	73.5	68.5	77.7	833	384	449	10	0.85	1.48	0.53	1.37	0.46	1.57	0.57	-5.72	0.000
		10	69.0	62.2	74.2	681	294	387	10	0.84	1.42	0.50	1.31	0.40	1.51	0.54	-5.29	0.000
		11	70.3	62.6	76.0	444	190	254	10	0.83	1.42	0.47	1.31	0.40	1.50	0.50	-4.35	0.000
	Victimization	6	56.5	56.1	56.8	650	335	315	10	0.82	1.31	0.43	1.28	0.40	1.34	0.45	-1.88	0.061
		7	55.1	49.9	60.1	769	373	396	10	0.84	1.32	0.45	1.26	0.41	1.37	0.48	-3.64	0.000
		8	61.4	53.9	67.4	840	371	469	10	0.86	1.38	0.48	1.31	0.45	1.43	0.50	-3.65	0.000
		9	74.9	72.1	77.3	833	384	449	10	0.84	1.49	0.53	1.46	0.52	1.52	0.54	-1.69	0.091
		10	70.2	65.3	73.9	681	294	387	10	0.84	1.46	0.52	1.42	0.50	1.49	0.53	-1.78	0.076

(Continued)

**SUPPLEMENTAL TABLE 2. Teen Dating Violence Exposure, Any and Subtypes (Continued)**

Violence Type and Exposure		Grade	% Any Endorsement			N			# Items	Cronbach Alpha	Means & Std. Deviations						Gender Difference	
			Overall	Male	Female	Overall	Male	Female			Overall	M <sup>a</sup>	F	t	p <sup>b</sup>			
TDV - Physical	Perpetration	11	74.1	70.0	77.2	444	190	254	10	0.85	1.46	0.51	1.44	0.47	1.48	0.54	-1.03	0.304
		6	24.6	19.5	30.0	613	313	300	9	0.81	1.10	0.27	1.07	0.20	1.14	0.33	-3.24	0.001
		7	26.7	17.8	35.1	739	360	379	9	0.84	1.12	0.29	1.07	0.24	1.16	0.33	-4.38	0.000
		8	30.8	21.7	38.0	819	364	455	9	0.84	1.13	0.32	1.09	0.28	1.17	0.35	-3.64	0.000
		9	28.5	17.3	38.0	829	382	447	9	0.80	1.12	0.27	1.06	0.22	1.16	0.30	-5.38	0.000
		10	22.3	14.4	28.3	677	292	385	9	0.81	1.09	0.25	1.05	0.20	1.12	0.28	-3.85	0.000
	Victimization	11	20.9	13.7	26.4	444	190	254	9	0.86	1.09	0.26	1.05	0.24	1.11	0.27	-2.26	0.024
		6	24.0	25.5	22.4	613	314	299	9	0.77	1.10	0.25	1.10	0.25	1.09	0.25	0.09	0.927
		7	25.7	24.6	26.7	735	357	378	9	0.84	1.10	0.27	1.10	0.29	1.10	0.25	-0.15	0.877
		8	29.6	28.1	30.8	815	363	452	9	0.83	1.12	0.30	1.11	0.30	1.12	0.29	-0.40	0.687
		9	27.6	26.2	28.9	829	382	447	9	0.81	1.11	0.26	1.10	0.27	1.11	0.26	-0.48	0.631
TDV - Threatening	Perpetration	10	21.6	22.9	20.5	677	292	385	9	0.78	1.08	0.22	1.09	0.26	1.07	0.18	1.17	0.243
		11	19.6	17.9	20.9	444	190	254	9	0.85	1.08	0.24	1.07	0.22	1.08	0.26	-0.82	0.412
		6	14.4	13.6	15.2	626	323	303	5	0.61	1.09	0.29	1.08	0.28	1.10	0.30	-0.84	0.403
		7	13.7	9.6	17.5	754	365	389	5	0.79	1.10	0.33	1.07	0.27	1.13	0.38	-2.69	0.007
		8	16.1	11.4	19.9	832	369	463	5	0.70	1.11	0.32	1.09	0.32	1.13	0.32	-1.89	0.058
		9	14.6	10.4	18.2	827	383	444	5	0.72	1.11	0.33	1.07	0.26	1.14	0.38	-3.09	0.002
	Victimization	10	14.1	9.6	17.4	676	292	384	5	0.71	1.09	0.28	1.05	0.21	1.12	0.33	-3.23	0.001
		11	12.9	11.1	14.2	443	189	254	5	0.82	1.09	0.30	1.07	0.26	1.10	0.33	-1.18	0.237
		6	15.0	15.2	14.8	620	316	304	5	0.71	1.10	0.31	1.10	0.32	1.10	0.31	-0.08	0.938
		7	13.9	12.4	15.4	753	364	389	5	0.73	1.09	0.31	1.08	0.28	1.11	0.34	-1.27	0.205
		8	15.1	14.7	15.4	828	367	461	5	0.75	1.11	0.34	1.11	0.35	1.11	0.32	0.00	0.998
9	15.7	14.7	16.7	826	382	444	5	0.75	1.11	0.34	1.11	0.34	1.12	0.35	-0.57	0.570		

(Continued)

**SUPPLEMENTAL TABLE 2. Teen Dating Violence Exposure, Any and Subtypes (Continued)**

Violence Type and Exposure	Grade	% Any			N			# Items	Cronbach Alpha	Means & Std. Deviations						Gender Difference		
		Endorsement			Overall	Male	Female			Overall	M <sup>a</sup>	F	t	p <sup>b</sup>				
		Overall	Male	Female														
TDV – Sexual	Perpetration	10	13.2	11.0	14.8	675	291	384	5	0.74	1.08	0.26	1.07	0.25	1.08	0.26	-0.70	0.484
		11	13.1	14.3	12.2	443	189	254	5	0.81	1.10	0.33	1.09	0.31	1.10	0.34	-0.15	0.878
		6	11.2	13.4	8.9	650	337	313	4	0.42	1.06	0.22	1.07	0.21	1.05	0.22	0.98	0.327
		7	10.8	11.4	10.3	740	360	380	4	0.66	1.07	0.27	1.09	0.33	1.05	0.19	1.59	0.112
		8	14.1	16.9	12.0	820	354	466	4	0.59	1.08	0.26	1.10	0.31	1.07	0.22	1.89	0.060
		9	14.4	15.4	13.6	833	384	449	4	0.46	1.08	0.23	1.08	0.25	1.07	0.21	0.54	0.589
	Victimization	10	14.2	13.7	14.7	681	293	388	4	0.50	1.08	0.24	1.07	0.22	1.08	0.26	-0.81	0.415
		11	14.8	14.1	15.4	445	191	254	4	0.50	1.08	0.24	1.08	0.26	1.08	0.22	0.36	0.721
		6	17.1	17.9	16.1	645	335	310	4	0.61	1.11	0.31	1.12	0.35	1.09	0.26	1.25	0.212
		7	16.6	14.7	18.4	741	360	381	4	0.65	1.09	0.28	1.10	0.33	1.09	0.22	0.61	0.545
		8	21.0	18.0	23.3	819	355	464	4	0.62	1.13	0.33	1.13	0.38	1.12	0.28	0.49	0.627
TDV - Relational	Perpetration	9	21.1	17.7	24.1	833	384	449	4	0.61	1.12	0.31	1.12	0.34	1.13	0.29	-0.71	0.479
		10	17.0	13.0	20.1	681	293	388	4	0.51	1.10	0.27	1.09	0.27	1.11	0.26	-0.96	0.337
		11	17.8	12.0	22.0	445	191	254	4	0.60	1.09	0.27	1.09	0.31	1.10	0.23	-0.27	0.788
		6	12.2	10.8	13.7	648	333	315	3	0.43	1.08	0.26	1.07	0.26	1.09	0.27	-0.89	0.374
		7	6.5	6.2	6.8	766	371	395	3	0.72	1.05	0.27	1.05	0.25	1.06	0.28	-0.39	0.696
		8	8.4	9.4	7.7	842	374	468	3	0.65	1.06	0.24	1.06	0.22	1.06	0.25	-0.06	0.954
	Victimization	9	7.3	9.6	5.3	834	384	450	3	0.75	1.05	0.23	1.07	0.30	1.03	0.14	2.66	0.008
		10	5.9	5.8	5.9	682	293	389	3	0.51	1.04	0.19	1.04	0.19	1.04	0.19	-0.20	0.844
		11	4.3	4.7	3.9	445	191	254	3	0.76	1.03	0.18	1.03	0.18	1.03	0.18	0.25	0.800
		6	16.6	16.0	17.3	645	332	313	3	0.63	1.13	0.37	1.12	0.38	1.14	0.36	-0.68	0.494
		7	12.7	11.7	13.7	762	368	394	3	0.70	1.11	0.37	1.10	0.35	1.12	0.40	-0.69	0.490
8	13.6	13.1	14.1	844	375	469	3	0.65	1.11	0.36	1.11	0.35	1.12	0.36	-0.21	0.831		

(Continued)

**SUPPLEMENTAL TABLE 2. Teen Dating Violence Exposure, Any and Subtypes (*Continued*)**

Violence Type and Exposure	Grade	% Any Endorsement			N			# Items	Cronbach Alpha	Means & Std. Deviations						Gender Difference		
		Overall	Male	Female	Overall	Male	Female			Overall	M <sup>a</sup>	F	t	p <sup>b</sup>				
TDV – Stalking	Perpetration	9	13.7	15.9	11.8	833	383	450	3	0.71	1.11	0.35	1.14	0.40	1.09	0.30	1.99	0.047
		10	10.4	9.6	11.1	680	293	387	3	0.72	1.09	0.34	1.09	0.32	1.10	0.36	-0.57	0.568
		11	8.1	9.4	7.1	445	191	254	3	0.80	1.07	0.28	1.08	0.29	1.06	0.27	0.60	0.551
		6	4.9	4.5	5.2	575	288	287	2	0.57	0.03	0.16	0.04	0.18	0.03	0.15	0.25	0.805
		7	3.9	4.0	3.8	717	349	368	2	0.57	0.02	0.13	0.03	0.13	0.02	0.12	0.28	0.780
		8	5.7	7.5	4.3	795	348	447	2	0.72	0.04	0.18	0.05	0.20	0.03	0.16	1.68	0.094
	Victimization	9	3.8	3.7	3.8	821	377	444	2	0.57	0.02	0.13	0.02	0.12	0.02	0.13	-0.25	0.801
		10	3.7	4.2	3.4	673	289	384	2	0.78	0.03	0.15	0.03	0.15	0.03	0.15	0.29	0.771
		11	2.5	3.2	2.0	439	188	251	2	0.69	0.02	0.11	0.02	0.12	0.01	0.10	0.65	0.514
		6	8.9	8.9	8.8	598	304	294	2	0.54	0.06	0.19	0.06	0.19	0.06	0.19	-0.01	0.990
		7	8.4	8.3	8.5	739	362	377	2	0.47	0.05	0.18	0.05	0.17	0.05	0.19	-0.46	0.649
		8	10.4	11.8	9.3	808	357	451	2	0.69	0.07	0.23	0.09	0.26	0.06	0.21	1.49	0.137
		9	9.3	8.5	10.1	824	378	446	2	0.67	0.06	0.21	0.06	0.21	0.07	0.21	-0.52	0.601
		10	9.1	7.9	10.0	671	290	381	2	0.67	0.06	0.21	0.05	0.19	0.07	0.22	-0.92	0.356
11	6.8	8.4	5.5	444	190	254	2	0.65	0.05	0.18	0.06	0.22	0.03	0.15	1.60	0.110		

*Note.* TDV = teen dating violence.

<sup>a</sup>All items used a 1 to 4 response range, except Stalking which used 0-1.

<sup>b</sup>p-values > .1 not shown.



**SUPPLEMENTAL TABLE 3. Teen Dating Violence Exposure in High School (YRBS items)**

Violence type and exposure	Grade	% Any Endorsement			N			# Items Cronbach alpha	Means & std. deviations						Gender difference	
		Overall	Male	Female	Overall	Male	Female		Overall	M <sup>a</sup>	F	T	p <sup>b</sup>			
		TDV - Perpetration	9	4.9	3.0	6.4	1166		529	637	1	0.02	0.11	0.02	0.10	0.03
Physical	10	3.0	2.8	3.1	1002	459	543	1	0.01	0.08	0.01	0.09	0.01	0.07	0.51	0.613
12mo	11	3.7	3.0	4.2	699	298	401	1	0.02	0.09	0.01	0.07	0.02	0.09	-1.00	0.317
Victimization	9	6.6	7.0	6.3	1172	532	640	1	0.03	0.13	0.03	0.13	0.03	0.14	-0.09	0.927
	10	6.5	7.1	6.0	994	463	531	1	0.03	0.12	0.03	0.13	0.02	0.11	1.21	0.227
	11	5.2	4.7	5.6	693	298	395	1	0.02	0.11	0.02	0.11	0.02	0.11	-0.09	0.929
TDV - Perpetration	9	1.6	1.9	1.3	1156	521	635	1	0.01	0.07	0.01	0.08	0.01	0.05	1.30	0.196
Sexual	10	1.7	2.6	0.9	995	461	534	1	0.01	0.08	0.01	0.10	0.00	0.06	1.93	0.054
12mo	11	1.6	2.7	0.7	701	300	401	1	0.01	0.05	0.01	0.07	0.00	0.03	1.80	0.072
Victimization	9	4.6	4.2	5.0	1154	529	625	1	0.02	0.11	0.02	0.11	0.02	0.11	-0.59	0.555
	10	4.8	5.2	4.5	1001	465	536	1	0.02	0.11	0.02	0.11	0.02	0.10	0.58	0.562
	11	3.6	3.7	3.6	690	298	392	1	0.02	0.10	0.02	0.11	0.02	0.09	0.44	0.661

Note. TDV = teen dating violence. YRBS = Youth Risk Behavior Survey.

<sup>a</sup>All items used a 1 to 4 response range.

<sup>b</sup>p-values > .1 not shown.

**SUPPLEMENTAL TABLE 4. Sexual Violence and Harassment Exposure**

Violence type and exposure		Grade	% Any Endorsement			N			# Items	Cronbach's alpha	Means & std. deviations					Gender difference		
			Overall	Male	Female	Overall	Male	Female			Overall	M <sup>a</sup>	F	T	p <sup>b</sup>			
Sexual Harassment	Perpetration	6	15.8	17.4	14.6	979	438	541	7	0.68	1.05	0.17	1.07	0.20	1.04	0.14	2.30	0.022
		7	16.9	18.7	15.5	1254	552	702	7	0.83	1.07	0.26	1.08	0.26	1.07	0.25	1.22	0.223
		8	18.4	22.1	15.5	1404	610	794	7	0.83	1.08	0.27	1.11	0.30	1.07	0.25	2.64	0.008
		9	15.7	18.8	13.4	1874	808	1066	7	0.73	1.05	0.19	1.07	0.21	1.04	0.16	3.22	0.001
		10	12.1	16.2	8.9	1531	681	850	7	0.82	1.05	0.20	1.07	0.26	1.03	0.13	3.93	0.000
		11	9.8	12.7	7.7	1003	417	586	7	0.76	1.04	0.16	1.05	0.18	1.03	0.14	2.01	0.045
	Victimization	6	30.9	34.6	27.9	1018	463	555	6	0.74	1.15	0.33	1.17	0.33	1.13	0.32	1.78	0.076
		7	37.3	33.2	40.6	1275	566	709	6	0.70	1.17	0.33	1.15	0.31	1.18	0.34	-1.82	0.069
		8	40.1	36.3	43.0	1428	626	802	6	0.77	1.20	0.38	1.18	0.35	1.22	0.40	-2.01	0.045
		9	30.5	26.8	33.3	1891	820	1071	6	0.70	1.13	0.29	1.12	0.28	1.15	0.29	-1.90	0.057
		10	27.8	25.5	29.6	1528	678	850	6	0.77	1.13	0.30	1.13	0.33	1.13	0.28	0.17	0.868
11	25.8	19.6	30.2	1004	418	586	6	0.76	1.11	0.28	1.09	0.26	1.13	0.30	-2.10	0.036		
Sexual Violence	Perpetration	6	1.4	2.5	0.6	969	434	535	1		1.02	0.18	1.03	0.22	1.01	0.13	1.90	0.058
		7	1.9	2.0	1.9	1243	547	696	1		1.03	0.25	1.03	0.24	1.03	0.26	-0.14	0.892
		8	2.5	3.8	1.5	1387	598	789	1		1.05	0.32	1.07	0.41	1.02	0.22	2.69	0.007
		9	1.1	1.2	1.0	1872	807	1065	1		1.02	0.17	1.02	0.16	1.02	0.18	-0.10	0.921
		10	1.0	1.6	0.5	1528	678	850	1		1.02	0.19	1.03	0.25	1.01	0.11	2.16	0.031
		11	0.7	1.0	0.5	1002	417	585	1		1.01	0.15	1.01	0.17	1.01	0.14	0.58	0.561
	Victimization	6	2.5	2.9	2.2	988	448	540	1		1.03	0.24	1.04	0.23	1.03	0.25	0.16	0.876

(Continued)

**SUPPLEMENTAL TABLE 4. Sexual Violence and Harassment Exposure (Continued)**

Violence type and exposure	Grade	% Any Endorsement			N			# Items	Cronbach's alpha	Means & std. deviations					Gender difference	
		Overall	Male	Female	Overall	Male	Female			Overall	M <sup>a</sup>	F	T	p <sup>b</sup>		
	7	3.4	2.9	3.9	1250	551	699	1	1.04	0.26	1.04	0.27	1.05	0.25	-0.27	0.787
	8	4.4	4.0	4.6	1417	620	797	1	1.07	0.36	1.07	0.40	1.06	0.31	0.65	0.517
	9	2.0	1.6	2.2	1886	819	1067	1	1.03	0.22	1.02	0.18	1.03	0.25	-1.31	0.191
	10	2.2	2.4	2.0	1524	674	850	1	1.03	0.20	1.03	0.24	1.02	0.16	0.95	0.344
	11	1.4	0.7	1.9	1003	417	586	1	1.02	0.14	1.01	0.12	1.02	0.15	-1.26	0.208

<sup>a</sup>All items used a 1 to 4 response range.

<sup>b</sup>p-values > .1 not shown.

**SUPPLEMENTAL TABLE 5. Bullying, Cyberbullying, and Physical Violence Exposure**

Violence type and exposure		Grade	% Any			N			#	Cronbach	Means & std. deviations					Gender difference		
			Endorsement			Overall	Male	Female			Overall	Male	Female	Items alpha	Overall	M <sup>a</sup>	F	T
Bullying	Perpetration	6	39.4	39.3	39.5	977	427	550	6	0.82	1.20	0.39	1.22	0.41	1.19	0.38	0.88	0.382
		7	40.7	40.2	41.1	1241	547	694	6	0.84	1.22	0.43	1.24	0.44	1.21	0.41	0.97	0.331
		8	42.3	40.4	43.7	1398	597	801	6	0.84	1.23	0.44	1.25	0.46	1.22	0.42	1.05	0.294
		9	30.5	33.2	28.5	1847	795	1052	6	0.79	1.14	0.33	1.16	0.36	1.13	0.31	1.94	0.053
		10	26.6	28.0	25.4	1520	674	846	6	0.82	1.13	0.34	1.17	0.41	1.11	0.27	3.56	0.000
		11	22.3	27.5	18.6	980	411	569	6	0.76	1.10	0.26	1.14	0.34	1.07	0.17	3.88	0.000
	Victimization	6	45.1	43.0	46.8	986	433	553	2	0.91	1.67	0.95	1.63	0.93	1.71	0.96	-1.32	0.186
		7	44.8	40.1	48.6	1247	553	694	2	0.89	1.61	0.86	1.52	0.80	1.68	0.90	-3.29	0.001
		8	41.6	39.0	43.5	1405	605	800	2	0.89	1.56	0.84	1.53	0.82	1.59	0.85	-1.28	0.200
		9	30.0	30.2	29.8	1849	797	1052	2	0.88	1.37	0.71	1.39	0.75	1.35	0.68	1.23	0.220
		10	25.4	24.8	25.9	1520	673	847	2	0.89	1.31	0.66	1.32	0.68	1.31	0.64	0.34	0.737
Cyberbullying	Perpetration	11	20.8	21.4	20.3	978	411	567	2	0.93	1.26	0.61	1.31	0.70	1.22	0.54	2.12	0.034
		6	6.5	8.5	4.9	987	437	550	2	0.73	1.06	0.28	1.08	0.30	1.05	0.25	1.63	0.103
		7	6.3	5.6	6.8	1258	556	702	2	0.75	1.06	0.27	1.06	0.28	1.06	0.26	-0.13	0.900
		8	7.7	7.5	7.8	1408	610	798	2	0.77	1.07	0.29	1.06	0.25	1.07	0.31	-0.57	0.569
		9	7.0	6.3	7.6	1871	814	1057	2	0.69	1.06	0.25	1.05	0.25	1.06	0.26	-0.79	0.431
		10	5.4	5.9	5.0	1535	680	855	2	0.71	1.05	0.23	1.06	0.29	1.04	0.17	1.94	0.053
	Victimization	11	4.6	4.1	5.0	1002	419	583	2	0.66	1.04	0.22	1.05	0.26	1.04	0.20	0.42	0.677
		6	12.8	11.8	13.5	996	441	555	2	0.62	1.11	0.34	1.10	0.30	1.12	0.38	-1.18	0.237
		7	17.7	11.6	22.5	1270	559	711	2	0.72	1.15	0.42	1.10	0.33	1.20	0.47	-4.60	0.000
		8	17.6	12.4	21.5	1411	611	800	2	0.77	1.16	0.43	1.11	0.36	1.19	0.47	-3.71	0.000
		9	15.0	12.6	16.9	1875	815	1060	2	0.66	1.13	0.36	1.11	0.33	1.14	0.38	-2.19	0.029
10	13.8	11.0	16.0	1538	683	855	2	0.72	1.12	0.35	1.10	0.36	1.13	0.35	-1.54	0.123		

(Continued)

**SUPPLEMENTAL TABLE 5. Bullying, Cyberbullying, and Physical Violence Exposure (*Continued*)**

Violence type and exposure	Grade	% Any			N			#	Cronbach	Means & std. deviations					Gender difference			
		Endorsement			Overall	Male	Female			Items	alpha	Overall	M <sup>a</sup>	F	T	p <sup>b</sup>		
		Overall	Male	Female														
Physical Violence	Perpetration	11	9.6	8.4	10.4	1002	418	584	2	0.75	1.08	0.31	1.08	0.33	1.09	0.29	-0.27	0.788
		6	5.4	7.9	3.3	876	391	485	1		1.07	0.35	1.11	0.41	1.05	0.29	2.43	0.015
		7	5.0	6.0	4.3	1171	517	654	1		1.07	0.33	1.09	0.39	1.05	0.27	1.74	0.082
		8	6.4	7.1	5.9	1322	563	759	1		1.09	0.40	1.10	0.39	1.09	0.40	0.43	0.670
		9	3.3	4.1	2.8	1831	789	1042	1		1.04	0.27	1.06	0.31	1.04	0.24	1.46	0.144
	Victimization	10	3.3	3.6	3.0	1507	664	843	1		1.05	0.32	1.06	0.38	1.04	0.26	1.34	0.180
		11	3.1	4.1	2.3	983	412	571	1		1.04	0.25	1.06	0.31	1.03	0.18	1.86	0.064
		6	5.5	8.9	2.9	883	394	489	1		1.08	0.37	1.13	0.49	1.03	0.22	3.75	0.000
		7	5.1	6.5	4.0	1178	523	655	1		1.07	0.36	1.09	0.39	1.06	0.33	1.59	0.111
		8	6.1	8.1	4.7	1337	571	766	1		1.09	0.41	1.12	0.45	1.07	0.39	1.84	0.066
		9	5.3	6.3	4.6	1839	794	1045	1		1.07	0.31	1.08	0.32	1.06	0.29	1.24	0.215
		10	3.7	5.4	2.4	1508	664	844	1		1.06	0.32	1.09	0.41	1.03	0.22	3.15	0.002
		11	3.7	4.8	2.8	984	413	571	1		1.05	0.27	1.07	0.34	1.03	0.21	1.83	0.068

<sup>a</sup>All items used a 1 to 4 response range.

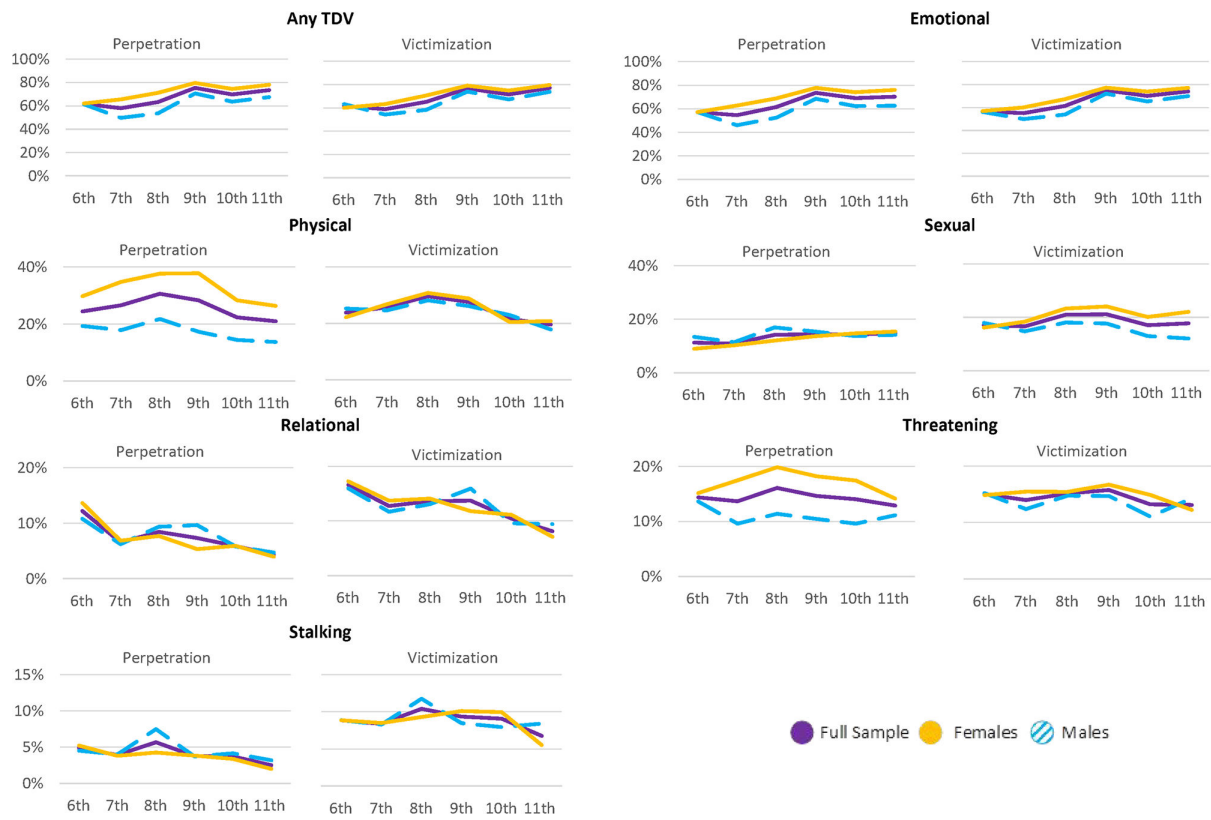
<sup>b</sup>p-values > .1 not shown.

**SUPPLEMENTAL TABLE 6. Witnessing Violence in the Home and Community**

Violence type and exposure		% Any Endorsement			N			# Items	Cronbach alpha	Means & std. deviations						Gender difference	
		Overall	Male	Female	Overall	Male	Female			Overall	M <sup>a</sup>	F	T	p <sup>b</sup>			
Witnessing Assault with a Weapon	6	24.6	23.6	25.3	1116	499	617	1		0.25	0.43	0.24	0.43	0.25	0.43	-0.63	0.527
	7	23.4	24.0	23.0	1331	597	734	1		0.23	0.42	0.24	0.43	0.23	0.42	0.40	0.692
	8	22.3	22.6	22.1	1486	654	832	1		0.22	0.42	0.23	0.42	0.22	0.42	0.24	0.813
	9	20.3	22.8	18.5	1902	829	1073	1		0.20	0.40	0.23	0.42	0.18	0.39	2.31	0.021
	10	16.2	18.1	14.7	1549	692	857	1		0.16	0.37	0.18	0.38	0.15	0.35	1.77	0.077
Witnessing Severe Violence in the Community	11	10.6	12.2	9.4	1012	426	586	1		0.11	0.31	0.12	0.33	0.09	0.29	1.41	0.157
	6	25.3	25.9	24.8	1119	502	617	1		0.25	0.43	0.26	0.44	0.25	0.43	0.42	0.675
	7	27.1	25.5	28.5	1330	596	734	1		0.27	0.44	0.26	0.44	0.28	0.45	-1.22	0.224
	8	25.9	24.3	27.2	1482	646	836	1		0.26	0.44	0.24	0.43	0.27	0.45	-1.25	0.213
	9	25.5	28.2	23.4	1907	833	1074	1		0.25	0.44	0.28	0.45	0.23	0.42	2.39	0.017
Witnessing Intimate Partner Violence	10	23.6	24.9	22.6	1545	686	859	1		0.24	0.42	0.25	0.43	0.23	0.42	1.07	0.284
	11	19.0	20.4	18.0	1006	422	584	1		0.19	0.39	0.20	0.40	0.18	0.38	0.95	0.342
	6	11.7	12.7	10.8	1131	510	621	2	0.73	0.12	0.32	0.13	0.33	0.11	0.31	1.01	0.312
	7	9.8	8.7	10.7	1348	608	740	2	0.75	0.10	0.30	0.09	0.28	0.11	0.31	-1.21	0.225
	8	9.2	9.4	9.1	1496	657	839	2	0.80	0.09	0.29	0.09	0.29	0.09	0.29	0.25	0.802
9	5.9	5.9	5.9	1910	834	1076	2	0.77	0.06	0.24	0.06	0.24	0.06	0.23	0.02	0.985	
10	5.5	5.3	5.7	1551	694	857	2	0.61	0.06	0.23	0.05	0.22	0.06	0.23	-0.33	0.740	
11	3.7	4.2	3.2	1011	425	586	2	0.68	0.04	0.19	0.04	0.20	0.03	0.18	0.81	0.417	

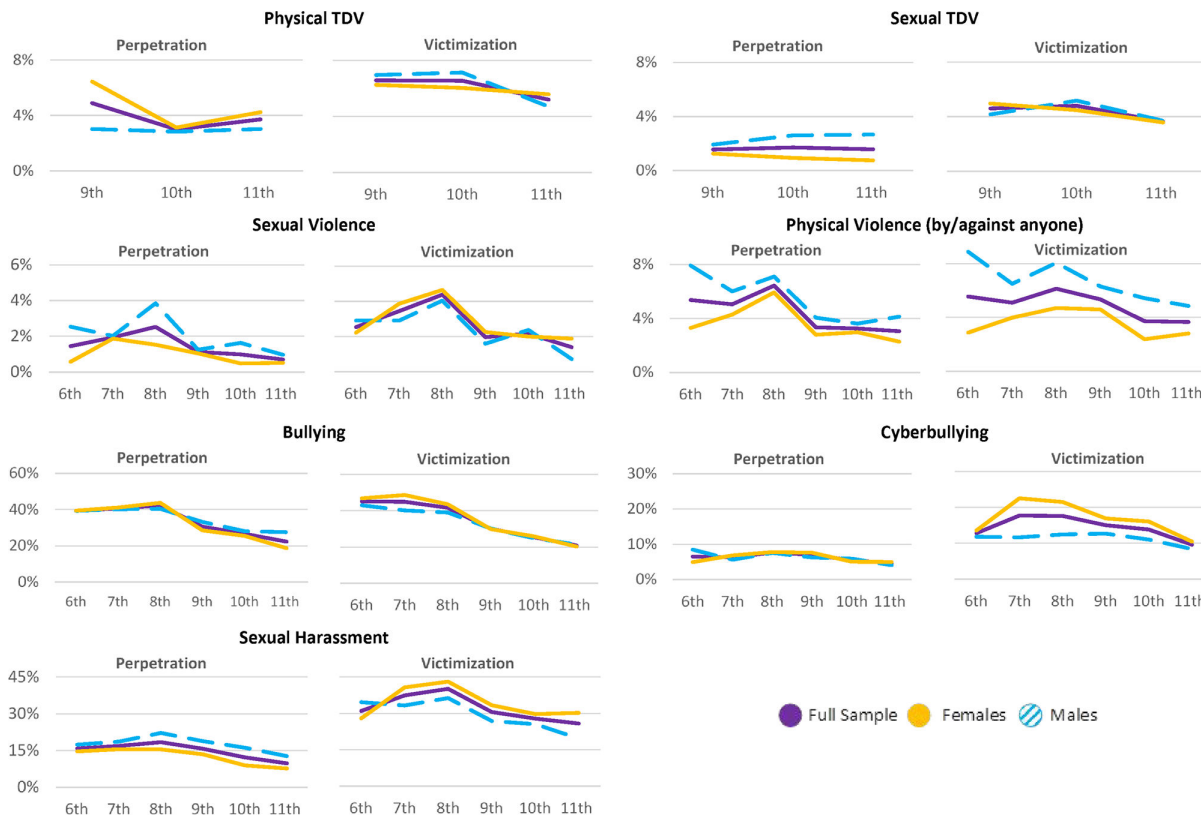
<sup>a</sup>All items used a 0-1 (No/Yes) response range.

<sup>b</sup>p-values > .1 not shown.



**SUPPLEMENTAL FIGURE 1.** Rates of Teen Violence (TDV) Exposure by Grade and Gender

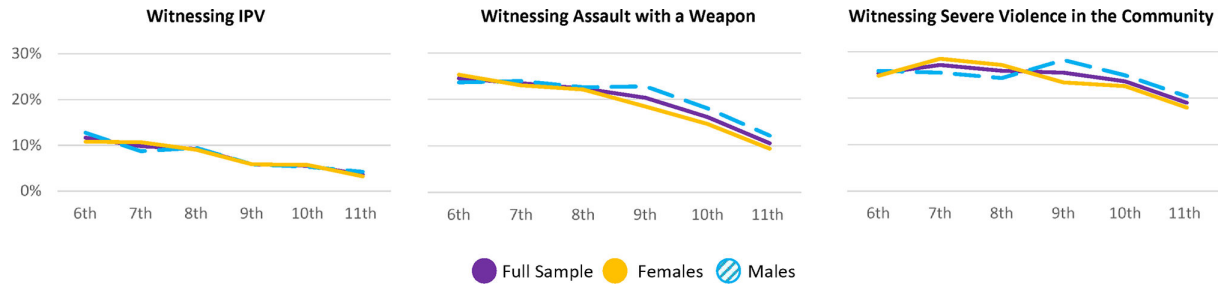
*Note.* TDV assessed with items from the conflict in Adolescent Dating Relationship Inventory (CADRI; Wolfe et al., 2001) and Safe Dates scales (Foshee et al., 1998).



**SUPPLEMENTAL FIGURE 2.** Rates of Physical and Sexual Teen Dating Violence (TDV; YRBS items), Sexual Harassment, Bullying, Cyberbullying, and Physical Violence Exposure by Grade and Gender

*Notes.* YRBS = Youth Risk Behavior Survey, CDC. Physical and sexual TDV were assessed with single-item measures asking about past 12 months exposure and administered in high school only.





**SUPPLEMENTAL FIGURE 3.** Rates of Witnessing Violence in the Home and Community by Grade and Gender

*Note.* IPV = Intimate Partner Violence; Witnessing Severe Violence in the Community includes "seeing of hearing people being shot, bombs going off, or street riots".