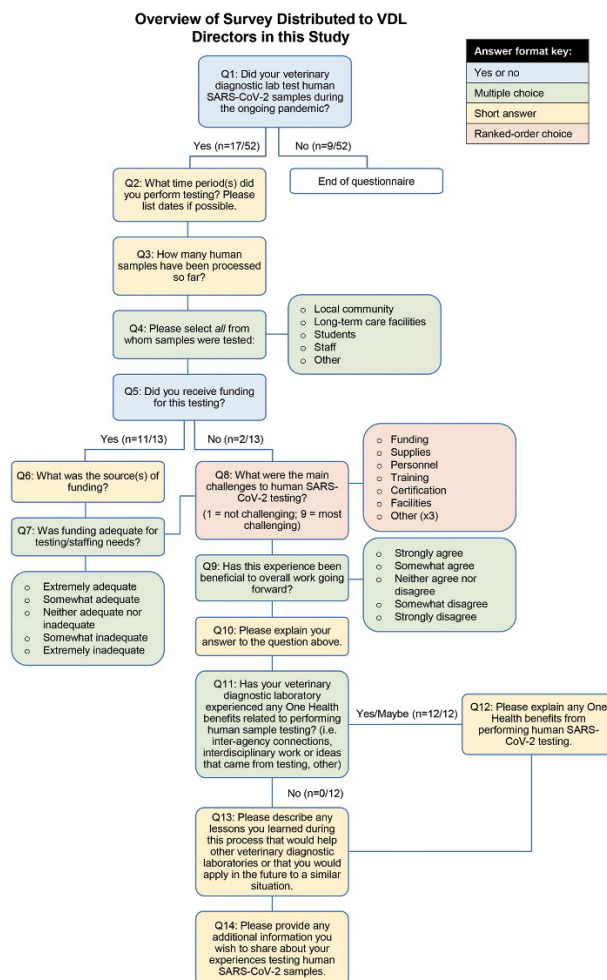


EID cannot ensure accessibility for Supplemental Materials supplied by authors. Readers who have difficulty accessing supplementary content should contact the authors for assistance.

Integrating Veterinary Diagnostic Laboratories for Emergency Use Testing during Pandemics

Appendix



Appendix Figure. Overview of survey distributed to veterinary diagnostic laboratory directors in this study. SARS-CoV-2, severe acute respiratory syndrome coronavirus 2; VDL, veterinary diagnostic laboratories.