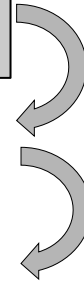


Table 1.

Veterans Utilizing VA Nebraska  
Western Iowa Health Care with >2  
Year Agricultural Exposure (n=681)

With COPD (n=123)

Veterans with COPD Completing  
a Nutrition Survey (n=41)



Variable	Zinc Insufficient (n=12)		Zinc Sufficient (n=29)		p-value
	Mean	SD	Mean	SD	
Age	66.5	6.7	66.4	8.4	0.97
BMI	28.2	8.1	29.6	7.4	0.61
FEV <sub>1</sub> percent predicted	60.3	25.1	75.0	20.4	0.056
FEV <sub>1</sub> /FVC % predicted ratio	52.9	13.4	61.0	9.9	0.039
FVC % predicted	82.4	23.4	90.5	15.6	0.20
DLCO	15.4	5.7	17.3	5.7	0.33
	N	%	N	%	
Smoking status					
Current	3	25%	5	17%	0.23
Former	9	75%	18	62%	
Never	0	0%	6	21%	
Education					
High School	5	42%	13	45%	0.85
More than High School	7	58%	16	55%	

\*All subjects were Caucasian and had COPD.

Figure 1.

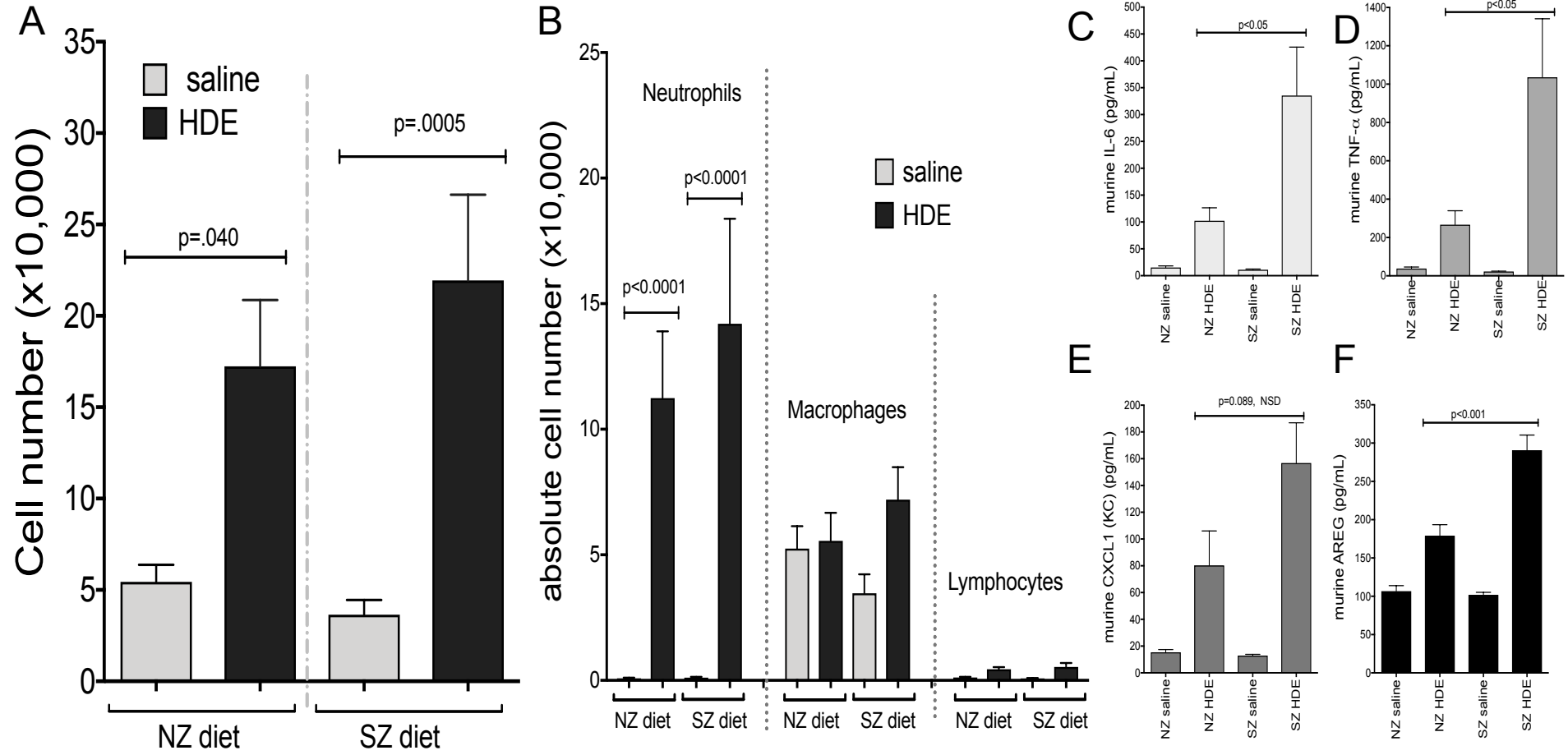


Figure 2.

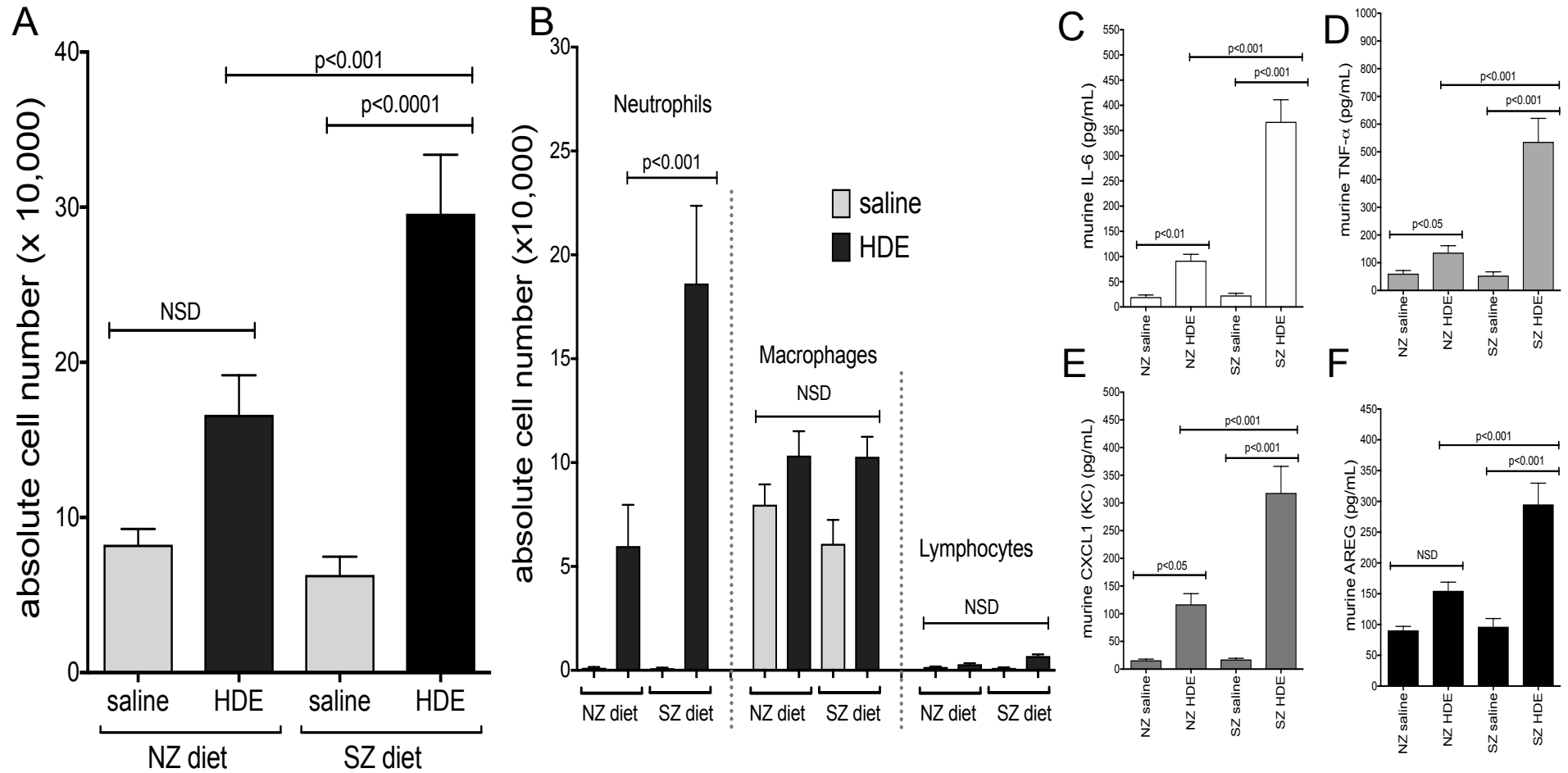


Figure 3.

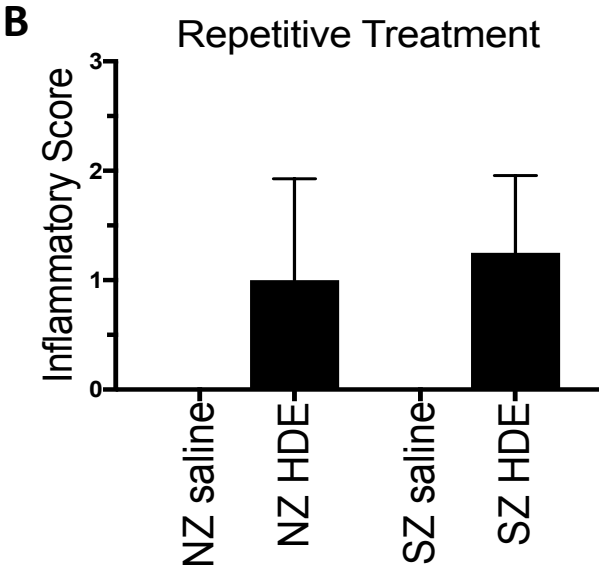
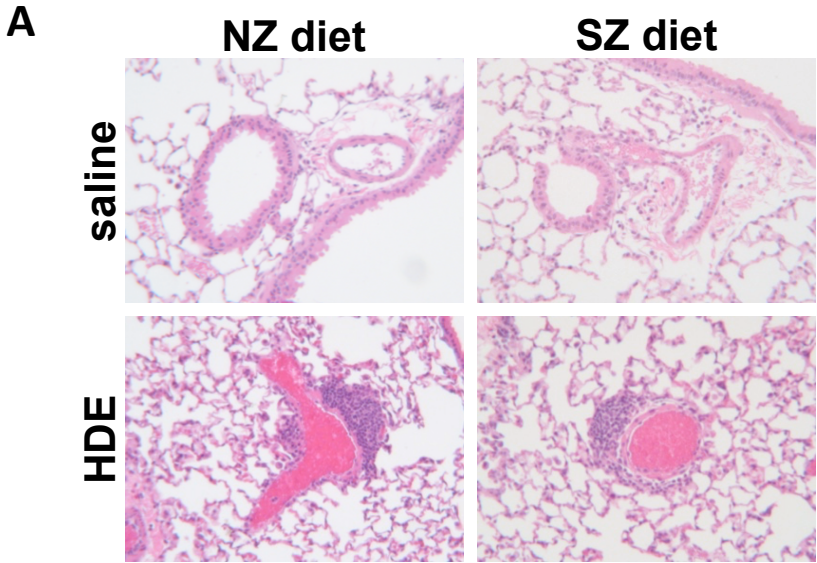


Figure 4.

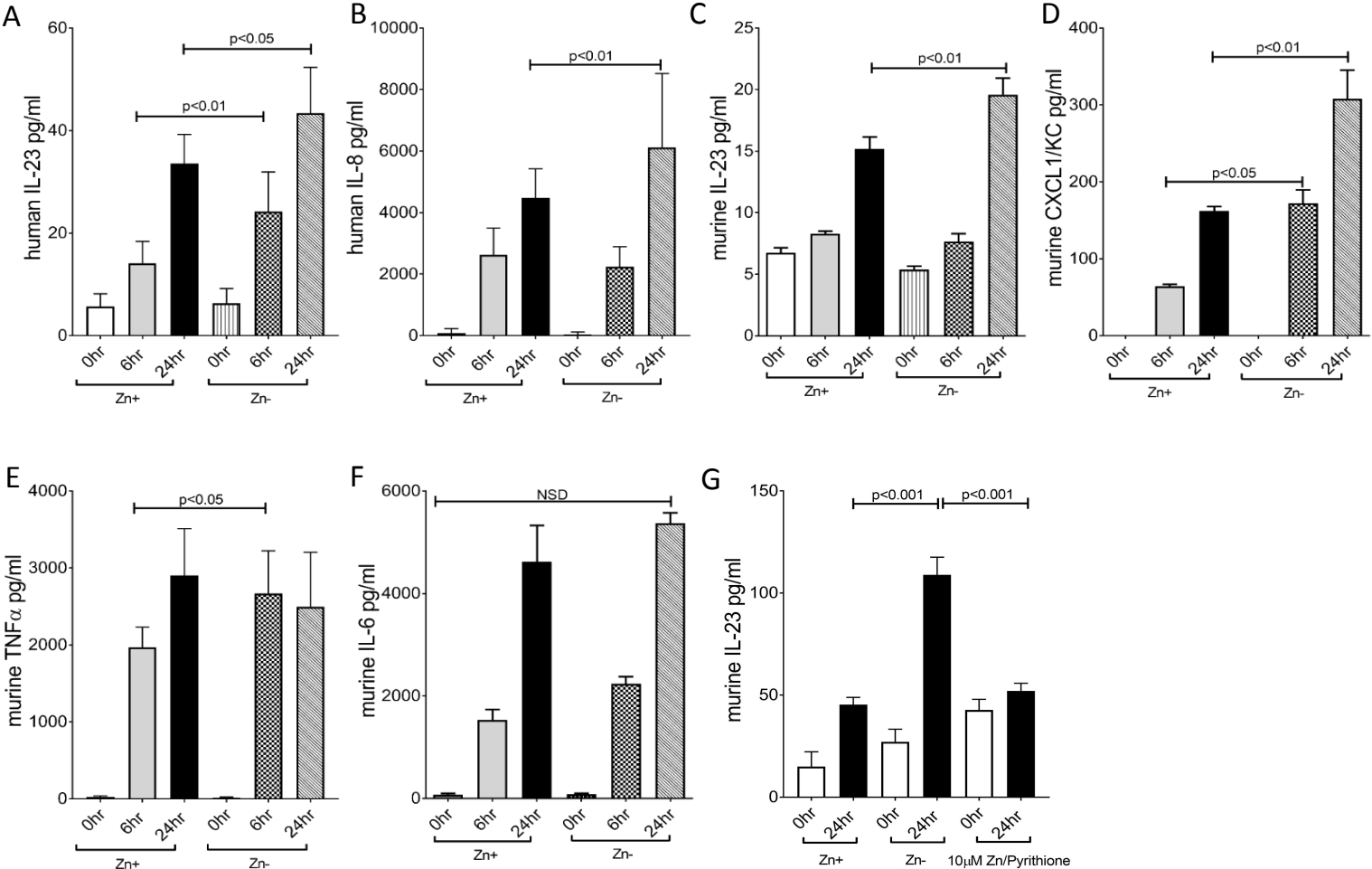


Figure 5.

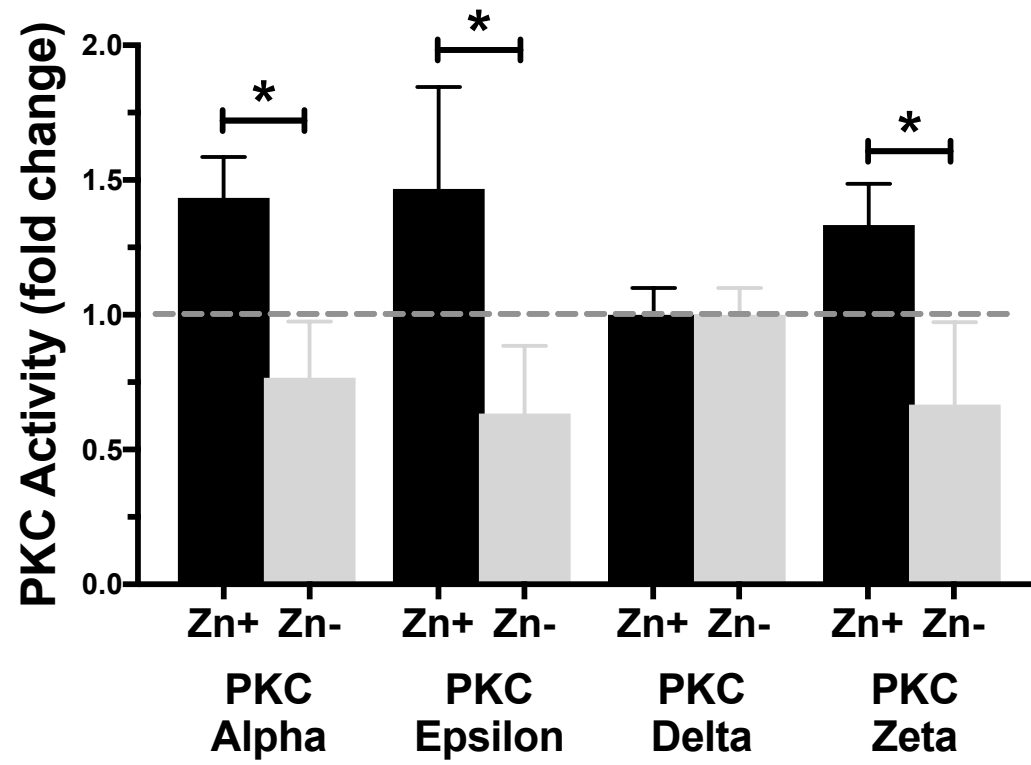


Figure 6.

